



Posiflex USB Printer VCOM Driver Installing Guide

Introduction

The purpose of this application note is to provide users of USB chips with a simple procedure for installing PP9000U/PP8800U device drivers for their devices under Windows XP and Win7 32bit.

1. Please change the **pin 1** and **pin 2** of DIP Switch1 to **ON**.
2. Turn on the USB Printer then the printer will change the USB class from USB Printer class to USB CDC class. (VCOM Mode)
3. Now, you can continue the installing steps below.

Installing Drivers

To install USB Printer drivers under Windows 2000/WinXP/Win7 for 32-bit base, follow the instructions below:

If a device of the same type has been installed on your machine before and the drivers that are about to be installed are different from those installed already, the original drivers need to be uninstalled. Please refer to the uninstall document for further details of this procedure.

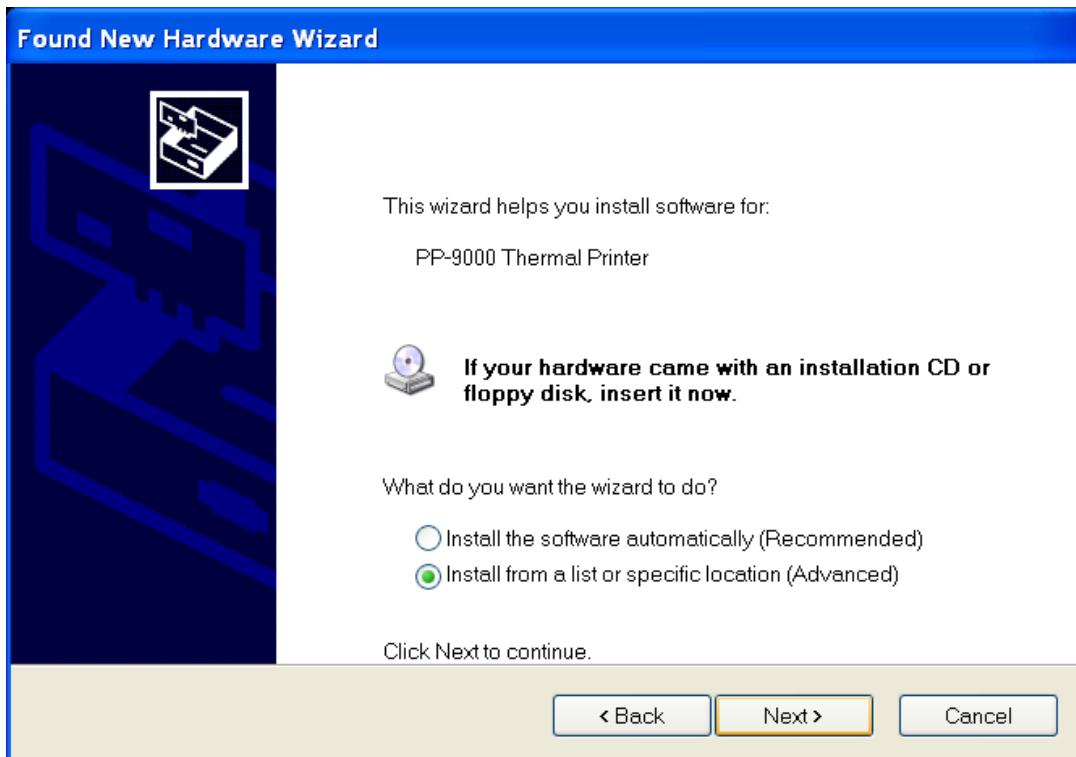
Installing Drivers under WinXP

The steps below are the examples for PP9000U.

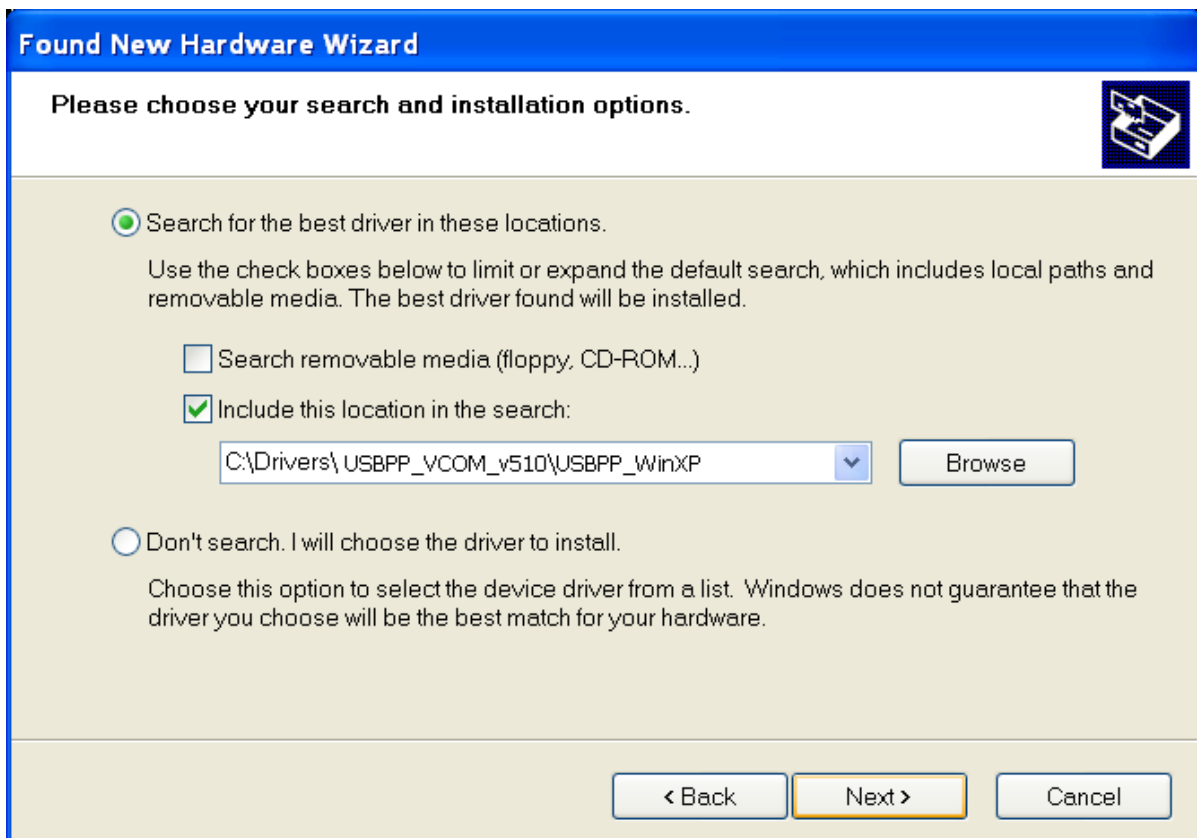
- Connect the device to a spare USB port on your PC. Select “No, not this time” from the options available and then click **Next** to proceed with the installation.



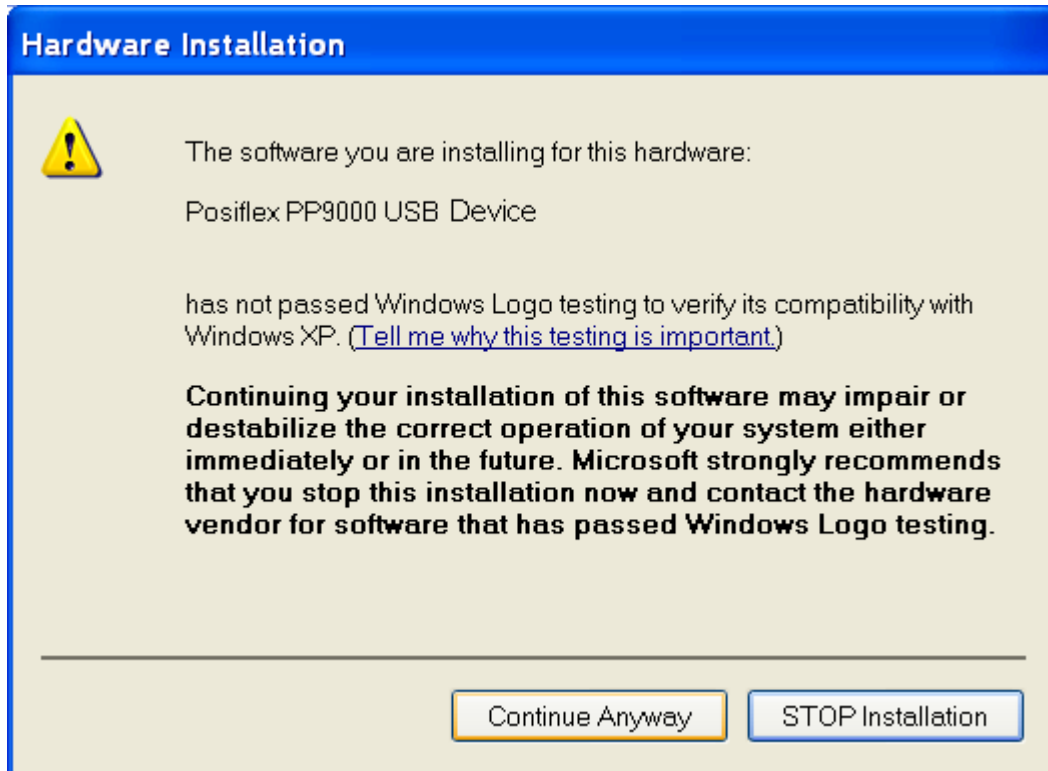
- Select "Install from a list or specific location (Advanced)" as shown below and then click **Next**.



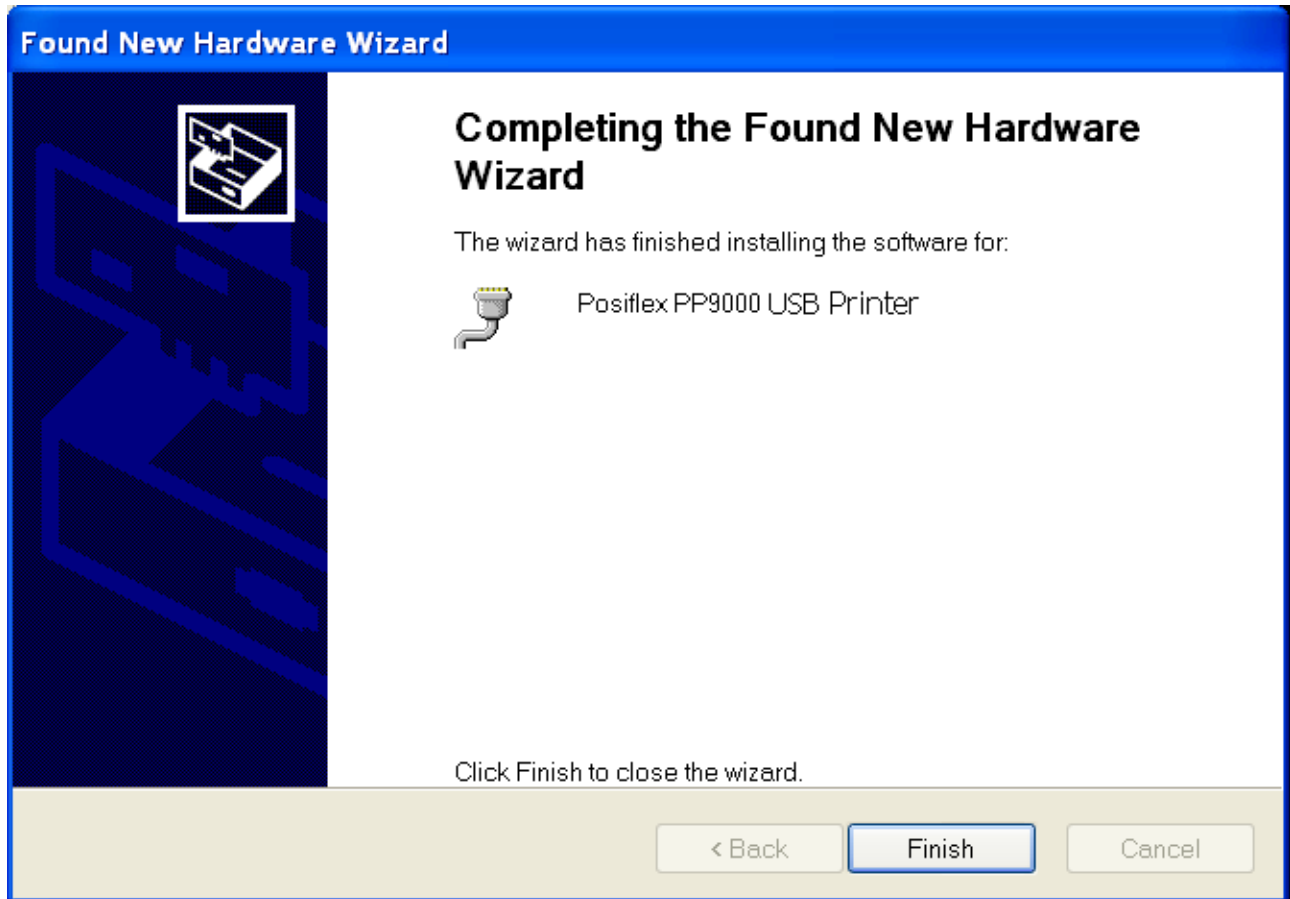
- Select "Search for the best driver in these locations" and enter the file path in the combo-box ("E:\Drivers\ USBPP_VCOM_v510\USBPP_WinXP" in the example below) or browse to it by clicking the browse button. Once the file path has been entered in the box, click **Next** to proceed.



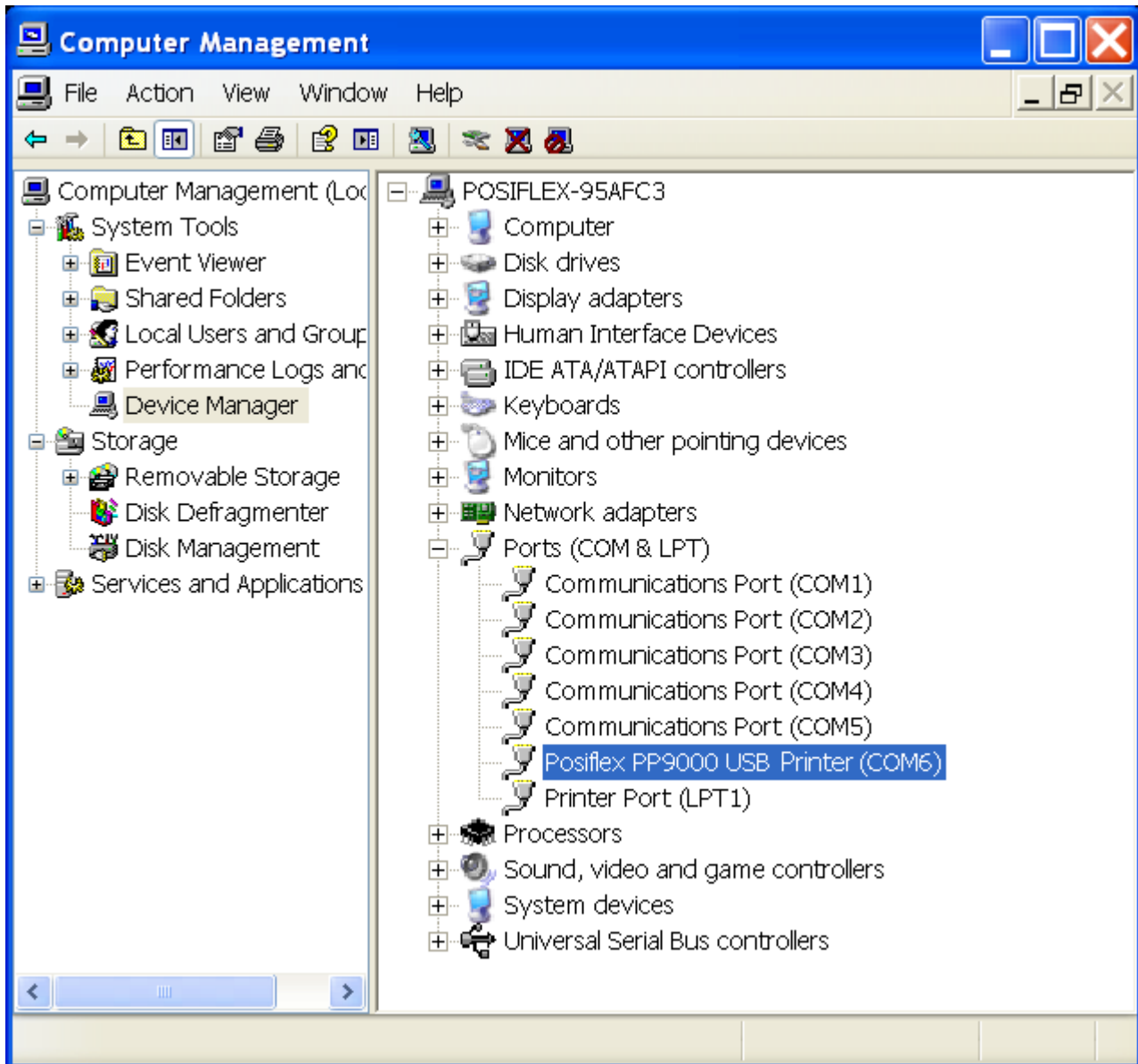
If Windows XP is configured to warn when unsigned (non-WHQL certified) drivers are about to be installed, the following screen will be displayed unless installing a Microsoft WHQL certified driver. Click on **Continue Anyway** to continue with the installation. If Windows XP is configured to ignore file signature warnings, no message will appear.



- Windows should then display a message indicating that the installation was successful. Click **Finish** to complete the installation for the first port of the device.



Open the Device Manager (located in "Control Panel\System" then select the "Hardware" tab and click "Device Manager") and select "Ports (COM & LPT)", the device appears an additional COM port with the label "Posiflex PP9000U USB Printer(COM6)".



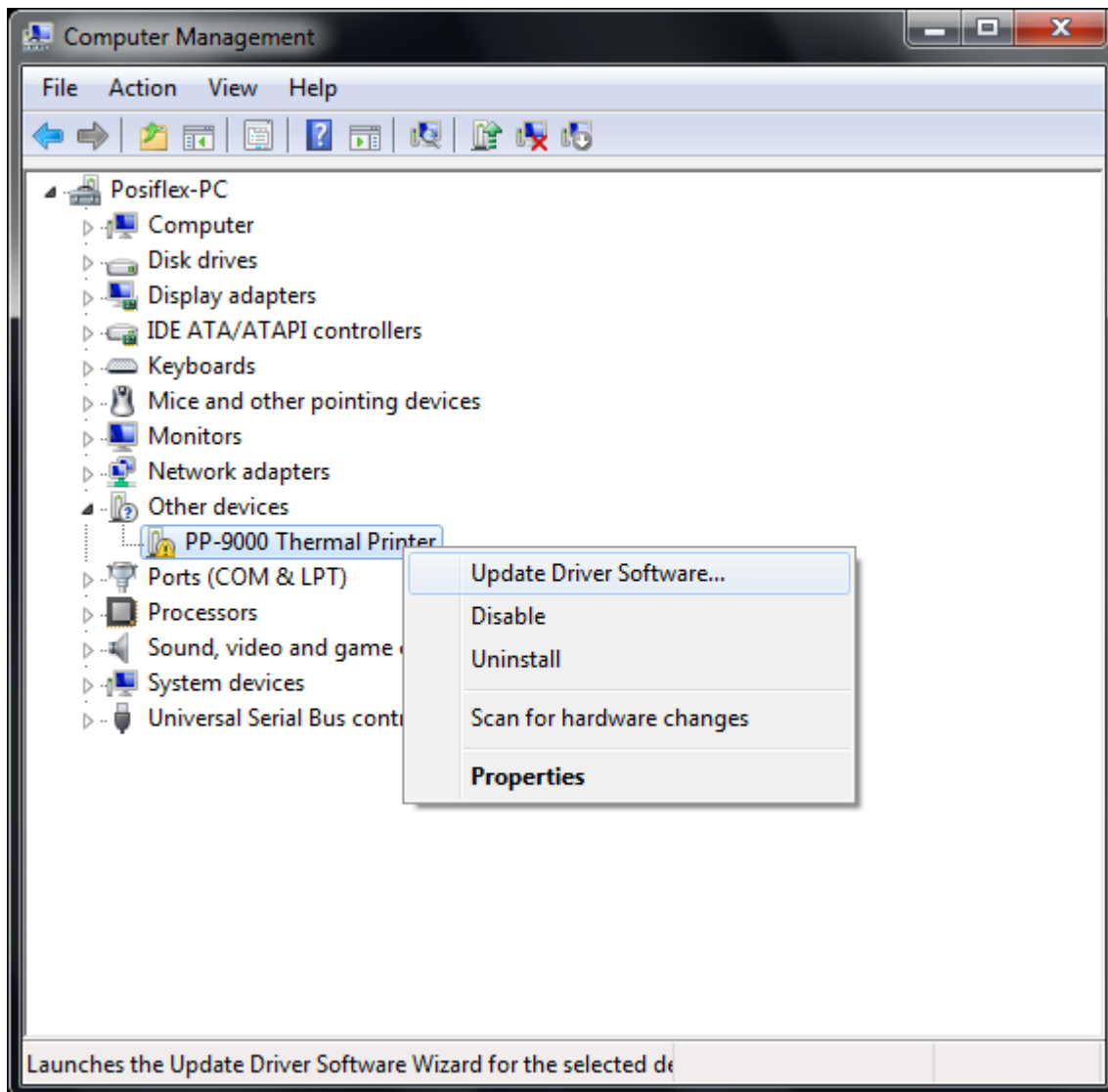
- This driver is to allocate a COM port using information derived from the cable's physical location on USB port. If the other cables are always plugged into the same USB port, then they will appear to the system as the same COM port.
- Limitations

Although this driver can be used to control the number of COM ports created in the system, it cannot prevent the installation of a new USB device for every unique device that is plugged in.

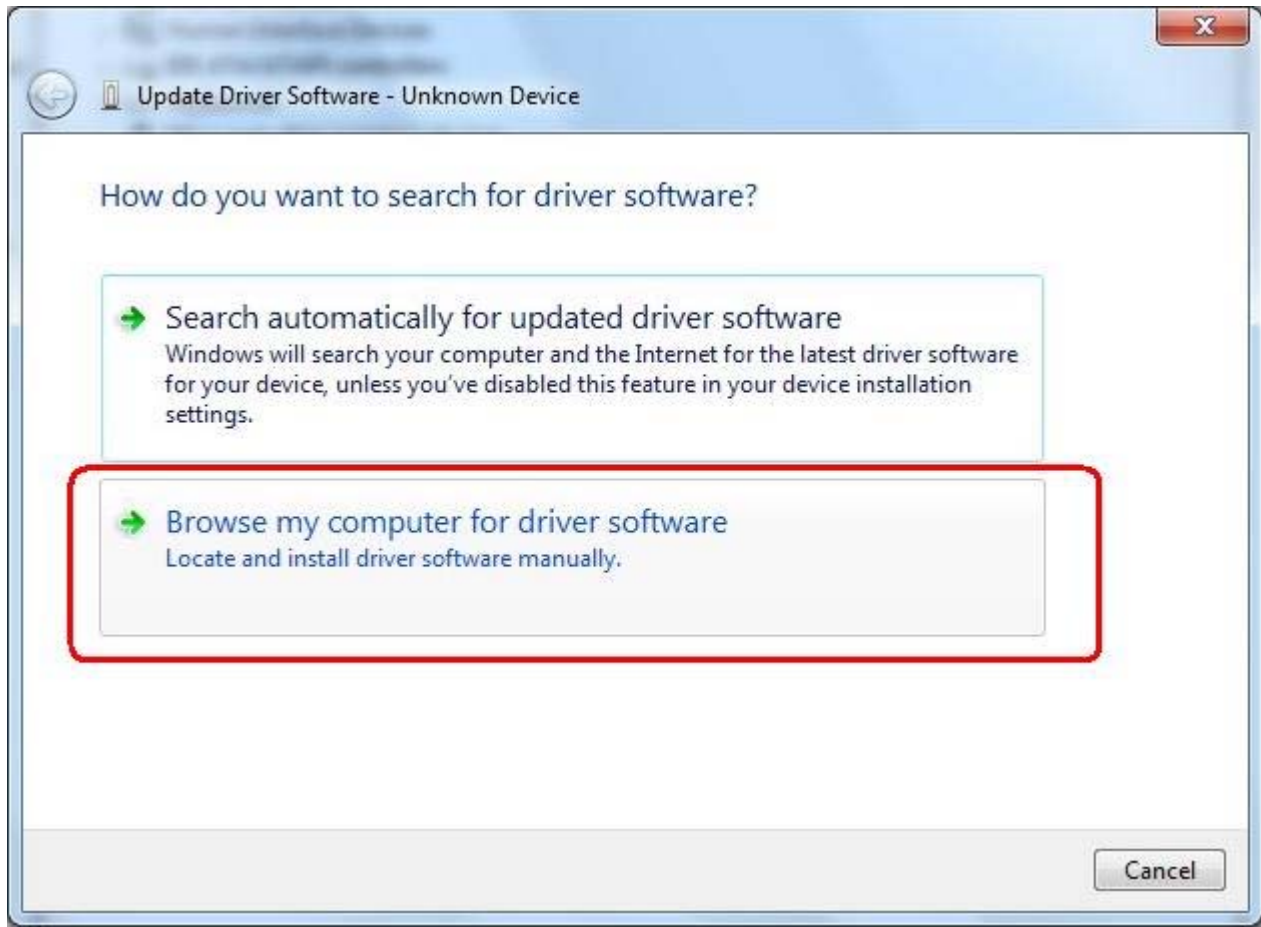
Installing Drivers under Win7 32bit

The steps below are the examples for PP9000U.

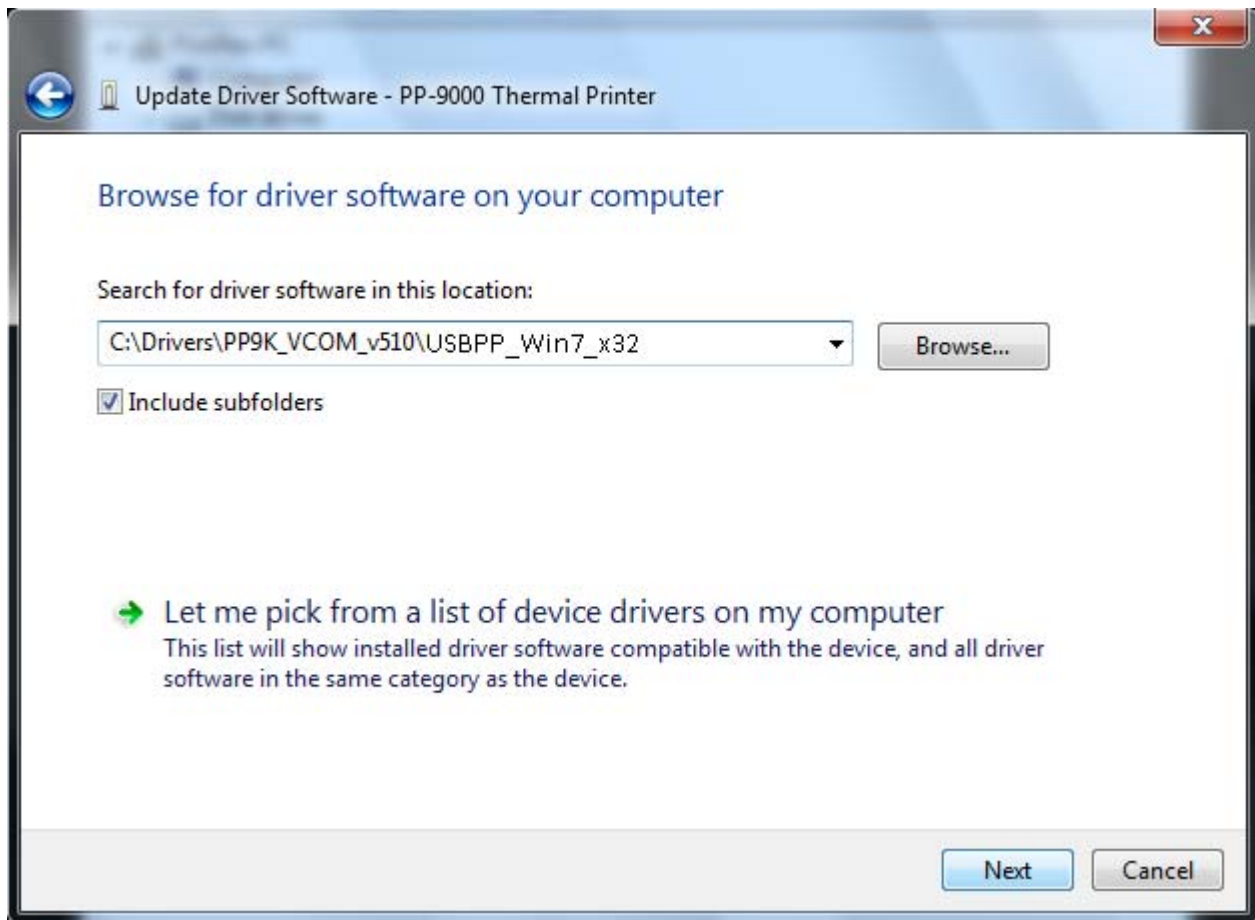
- Right click "Computer" and select "Property" to view the "Device Manager" whether display unknown device or not when you connect the USB Printer to USB port on your PC.
- Right click on this "unknown device" and select "Update Driver Software" to continue driver installation.



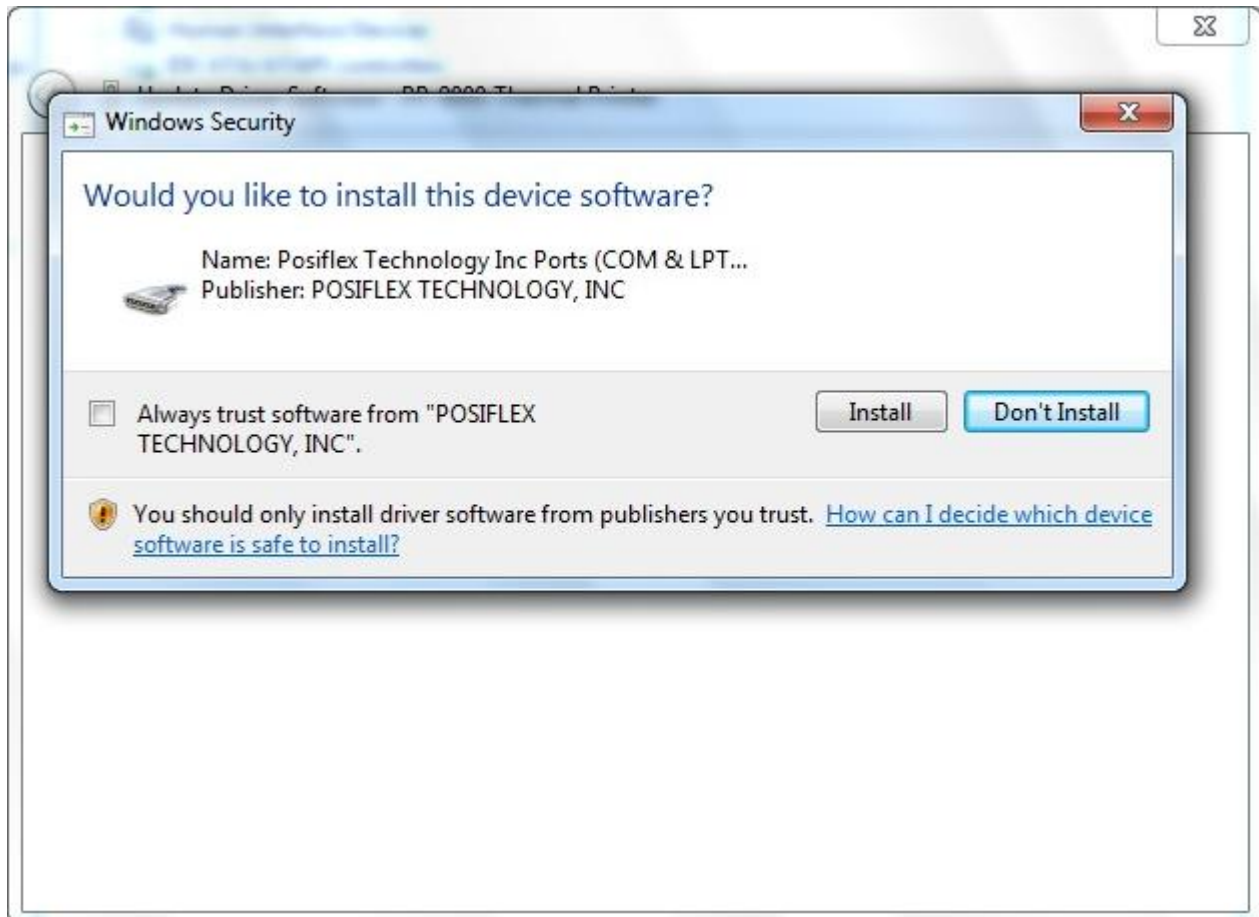
- Click on "Browse my computer for driver software".



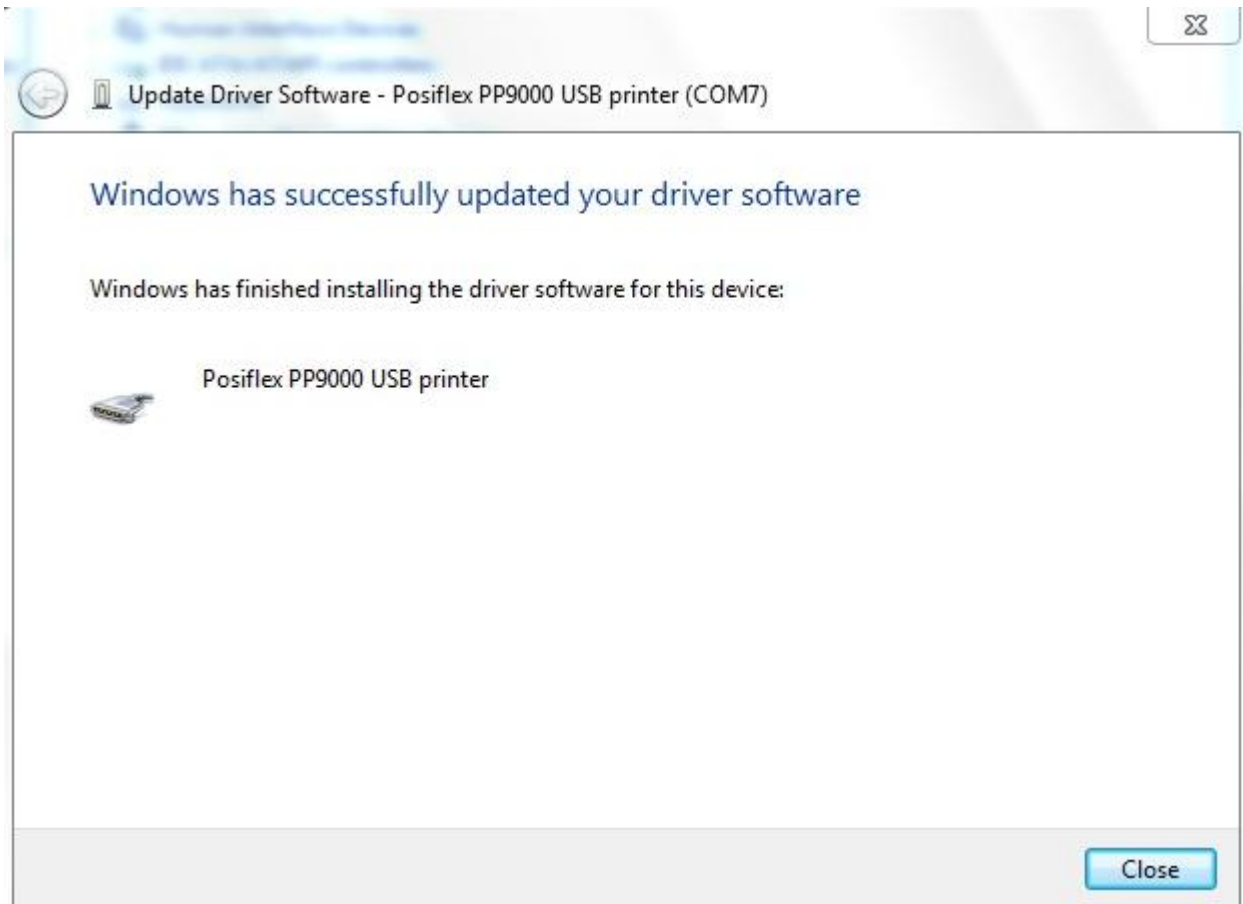
- Click "Browse" to search for driver software.



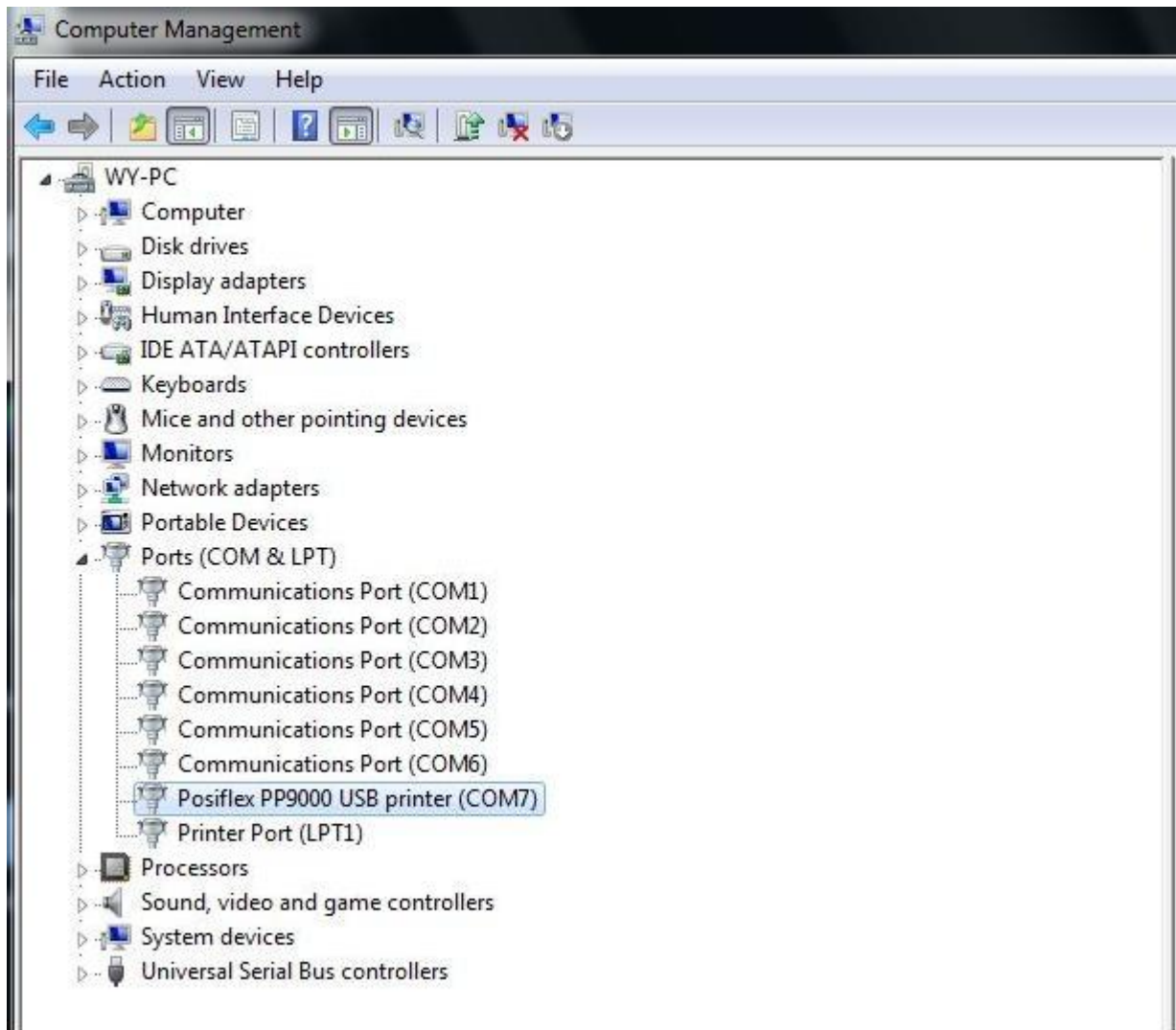
- Click on "Install" to continue with the installation.



- Windows should then display a message indicating that the installation was successful. Click "Finish" to complete the installation for the first port of the device.



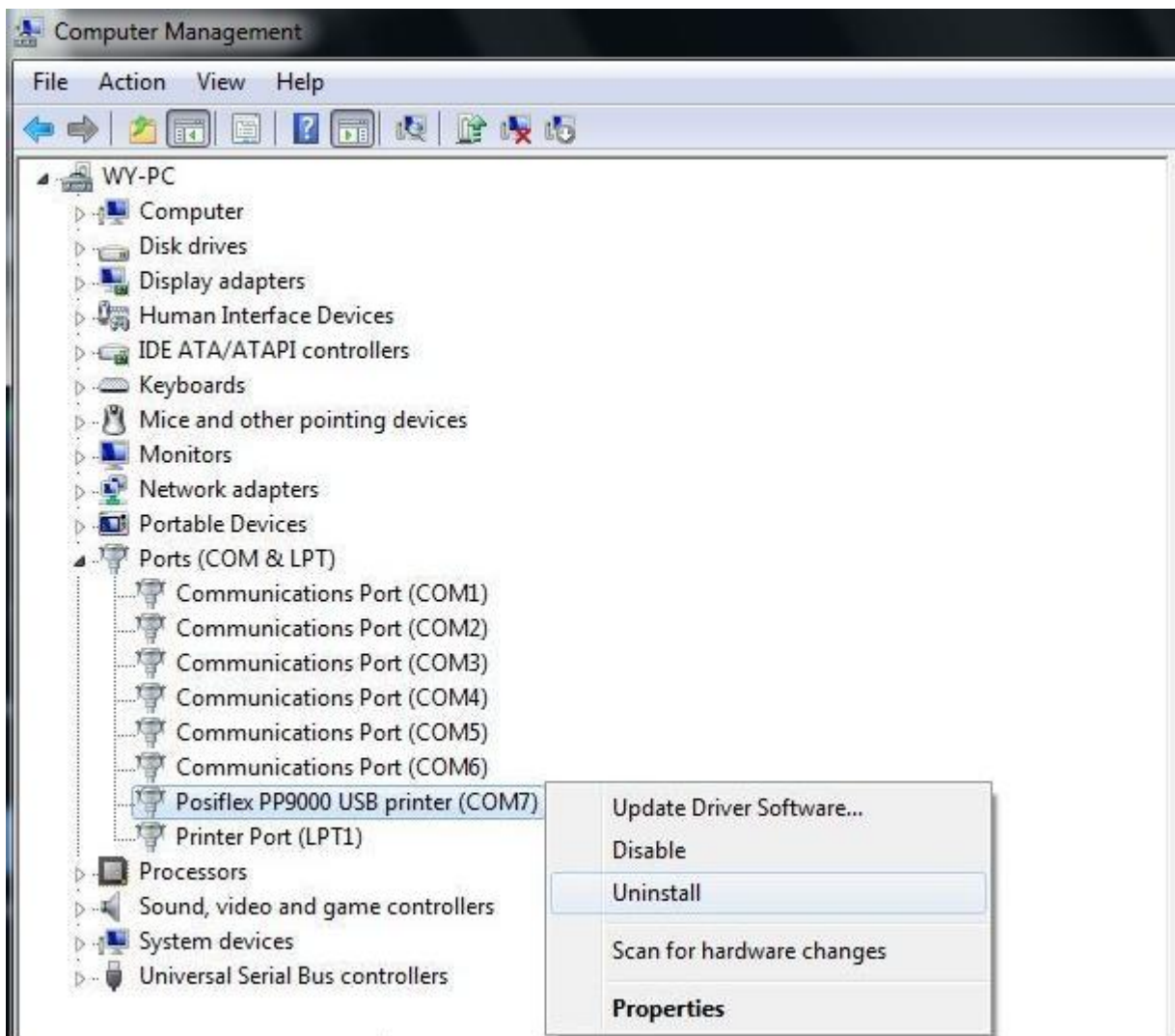
- Open the Device Manager (located in "Control Panel\System" then select the "Hardware" tab and click "Device Manger") and select "Ports (COM & LPT)", the device appears an additional COM port with the label "Posiflex PP9000U USB Printer(COM7)".



Uninstalling Drivers

To uninstall USB Printer drivers, follow the instructions below:

- Please connect the USB Printer device to PC.
- Open the Device Manager (located in "Control Panel\System" then select the "Hardware" tab and click "Device Manger") and select "Ports (COM & LPT)".
- Then right-click on the virtual COM port of "USB Printer" and select "Uninstall" from the menu.
- Please tab "Yes" to confirm to remove USB Printer device.



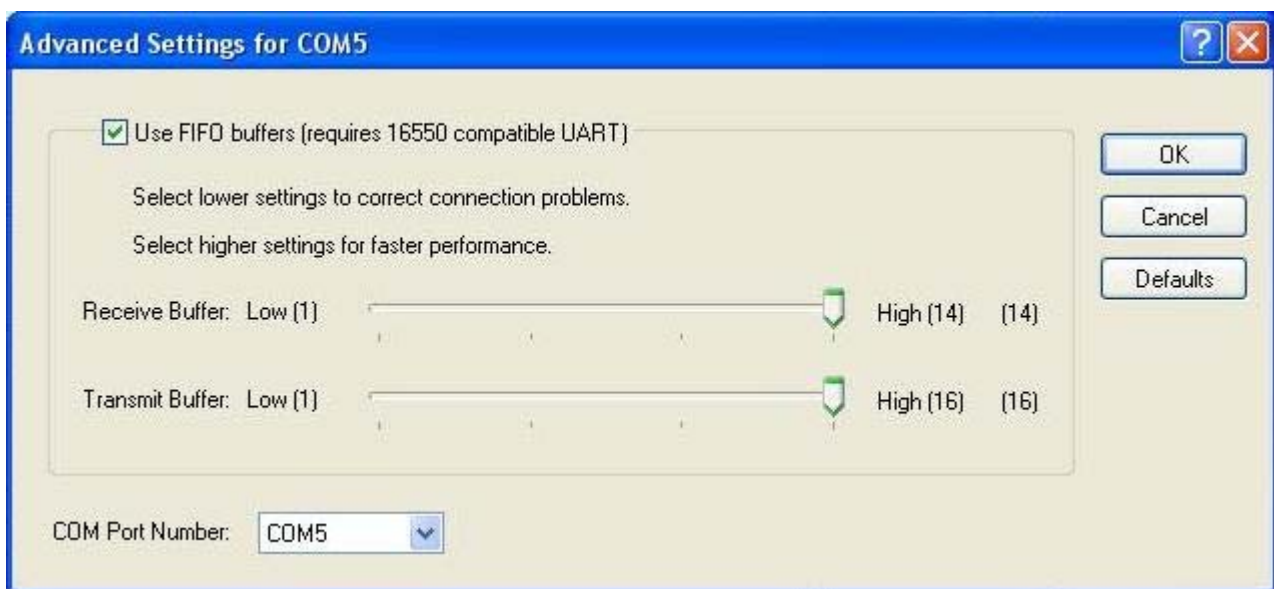
Advanced drivers options

An advanced properties page is available for devices using this driver. To access the advanced properties page in Windows 2000 or Windows XP or Windows 7, go to "Control Panel -> System" then select the "Hardware" tab and click "Device Manager...". Find the USB serial port you want to change the properties of and right-click on it. Select **"Properties"** from the menu then select the **"Port Settings"** tab and click **"Advanced"** button to get the window below.

This page allows configuration of the basic device COM Port Number. To access more advanced settings, click on the "Advanced..." button to display the advanced properties page (shown below).

This page will allow COM port number to be altered:

<WinXP>



<Win7>

